



CLINICIAN INFORMATION LEAFLET

NATROX[®] O₂

Continuous Topical Oxygen Therapy



Designed
simply to **HEAL**
W  **OUNDS**

PATIENT DETAILS



PATIENT NAME:

PRESCRIBER NAME:

WOUND TYPE AND LOCATION:

WOUND CARE PROCEDURE:

**ODS GOES SHINY BEIGE SIDE UP CENTRALLY ON THE WOUND BED*

DRESSING CHANGE FREQUENCY:

NATROX® O₂ REPRESENTATIVE CONTACT INFORMATION:

INTRODUCING NATROX® O₂



NATROX® O₂ is a wearable medical device designed to continuously deliver topical oxygen directly to a wound to promote and enhance healing.

NATROX® O₂ OXYGEN GENERATOR (OG)

- Generates oxygen from the atmosphere through water electrolysis
- Flashing green light indicates device is working



NATROX® O₂ BATTERIES

- Battery slides into the OG

When Charging:



Flashing yellow light indicates the battery is charging



Solid yellow light indicates the battery is fully charged



NATROX® O₂ OXYGEN DELIVERY SYSTEM (ODS)

- Delivers oxygen to the wound
- Replaced with each dressing change

WHAT TO EXPECT WITH **NATROX[®] O₂^{*}**



Always refer to the **Instructions for Use (IFU)**



*As referenced in citation: Yu J, et al (2016) Topical oxygen therapy results in complete wound healing in diabetic foot ulcers. *Wound Repair and Regenerations*. 24 1066-1072



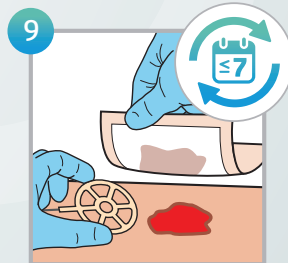
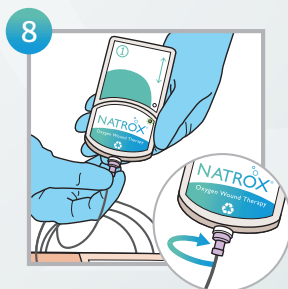
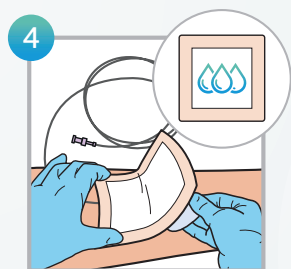
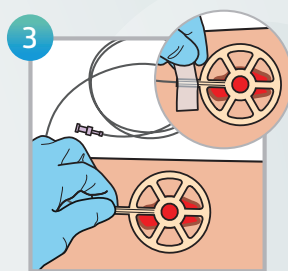
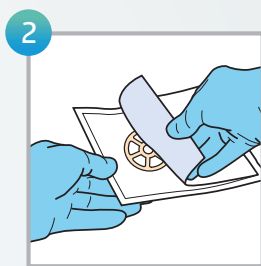
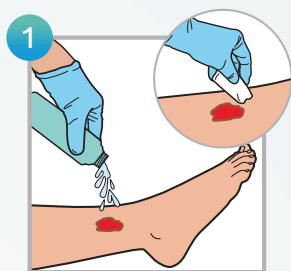
To view
NATROX[®] O₂
application videos

<https://bit.ly/nwc-no2application>



HOW TO APPLY **NATROX[®] O₂**

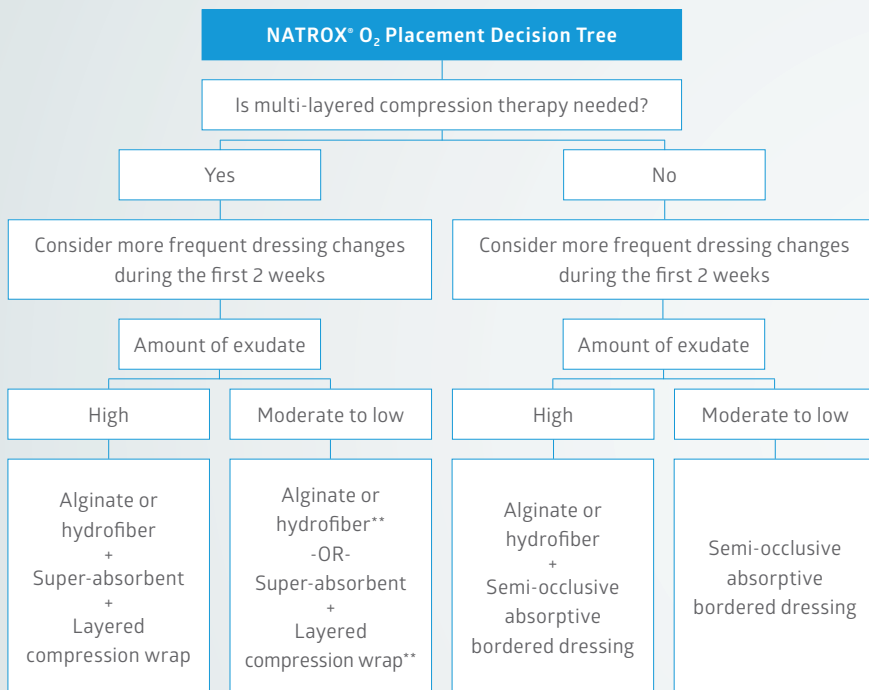
prior to any application of **NATROX[®] O₂**



REMINDERS FOR CLINICIANS

DRESSINGS

The dressing choice is indicated by the amount of drainage and wound characteristics and is directed by the provider. The following algorithm may provide guidance on choosing the appropriate dressing(s).



***Frequency of dressing changes and extra absorptive layers may be modified depending on drainage amount*

DRESSING CHANGES

- Frequency depends on amount of drainage
- First 2 weeks: 2-3x a week is suggested
- Frequency reduced as drainage decreases, but must occur once every 7 days
- Replace ODS with each dressing change

NATROX® O₂ APPLICATION

- For excess drainage, consider barrier film/protectant to peri-wound
- Place ODS directly on centre of wound, shiny beige side up
- Avoid direct contact of tubing with skin under pressure, consider padding for protection
- Secure ODS with small piece of tape over tubing
- If needed, secure dressing edges with tape or transparent film

PRODUCT PLACEMENT ON WOUND BED



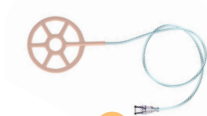
Cover Dressing- covers ODS, seals oxygen in

e.g. appropriate semi-occlusive dressings, compression wraps



Additional Absorptive Dressing—for excess drainage

e.g. superabsorbent dressings, foams, alginates, hydrofibers



ODS- placed against the wound bed***

***Exception: ODS is placed over the top of collagen, skin substitutes, skin grafts, or other gas permeable products



Wound bed

ODS and appropriate cover dressing required throughout therapy with NATROX® O₂

REMINDERS FOR PATIENTS

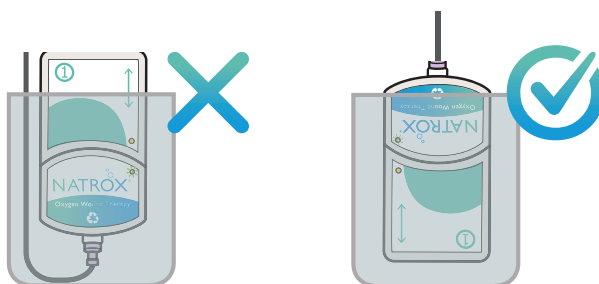


WOUND DRAINAGE

Expect an initial increase in drainage. Don't be alarmed. Drainage should decrease as healing progresses.

TIPS & TRICKS

- Always have a battery on charge
- Battery needs to be changed every 24 hours
- Make sure the green light is flashing on the OG
- Don't overtighten the twist-and-lock connector between the OG and the ODS
- Follow the diagram below to make sure the tubing does not get bent or kinked



For more information:
www.natroxwoundcare.com
+44 (0)1223 66 1830



NatroxWoundCare



Natroxwoundcare



Natroxwoundcare



CL_09/24 (V4)



Inotec AMD LTD Unit 7340 | Building 7300 Cambridge Research Park
Beach Drive | Waterbeach | Cambridge | England | CB25 9PD